

APPLIKATOR 3000

For all your work up to 3 m long (5' x 10')

To watch a live demo about our Applikator table, scan the QR code or click on the link

<https://vimeo.com/504396584>



Applikator 2600 wooden table

SIGNIFICANT EFFICIENCY GAIN AND TIME SAVING IN YOUR PRINT FINISHING OPERATIONS

- Lamination of any kind of adhesive material and mounting up to 65 mm (2 ½") thickness
- Working Width 168 cm (66"), Working length 311 cm – 122"
- Electrical motors as the source for controlling the roller's elevation motion and safety control by laser sensor
- Adjustable pressure from both ends of the gantry with 3 pre-set levels for precise pressure application
- Roller stays parallel to the table surface, wherever the media is positioned on the working surface
- Assembled on site within a few hours by one technician. The table will fit in any working environment, even with narrow access.
- Delivered with self levelling castors
- Choice of 2 work surfaces: wood as a base version or laminated glass for a smooth diffusion of backlighting. LED lighting system available as an option
- Antistatic, self-healing and phtalate free PVC mat, thickness of 4 mm, cut to the table size, included with the machine
- Adjustable height upon installation 85/95/105 cm (33 ½"/37 ½"/41")

APPLIKATOR 3000

—• OPTIONS

SUPPLY OF ADHESIVE ROLLS

APPSUPAXE

Adhesive roll holder



APPFREIN

Adhesive roll holder on an aluminium self-blocking shaft. Delivered without shaft



AX 1650

Self-blocking shaft in 165 cm – 65"



BA 1650 30

Scrolling bar



STORING & CUTTING

STORING SYSTEM

For Applikator 3000, to be installed at the end of the table. Delivered without shaft



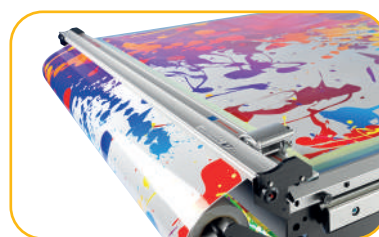
SHELF

Adaptable on the long or short edge of the table



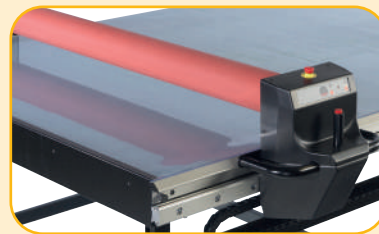
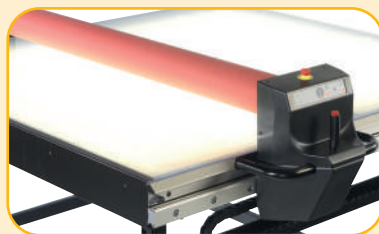
CUTTING BAR ADAPTATION

Perfect for works in series. The cutting bar is easily removable from its location.



LED LIGHTING SYSTEM

Directly connected to the power supply of the machine. Improves accuracy for the most demanding jobs.



—• TECHNICAL DATA

Maximum thickness	6,5 mm (2 ½")
Working width/Total width (cm – inch)	168 cm – 66' / 227 cm – 90"
Working length/Total length (cm – inch)	311 cm – 10' 3" / 352 cm – 11' 6"
Electricity	110 & 230 V, 50-60 Hz – 400 W with LED
Shipping dimensions	2 parcels: 360 x 72 x 80 cm & 233 x 72 x 75 cm (9' 6" x 2' 4" x 2' 8" & 7' 8" x 2' 4" x 2' 6")
Net Weight (kg – lb)	440 kg – 970 lb
Shipping weight (kg – lb)	about 550 kg - 1212 lb depending on the configuration
Warranty	2 years
Made in France, CE certified, based on European Machines Directives and electromagnetic compatibility CEM & FCC	

Find more information about this machine and our product range at www.kala.fr or click on the link below

[General Documentation](#)

